

BASIC FLEECE

								
WHITE	GREY HEATHER (PMS 429 C)	SALT-N-PEPPER (COOL GREY 9 C)	GUNMETAL HEATHER (PMS 424 C)	SOLID CHARCOAL (PMS 431 C)	CHARCOAL HEATHER (PMS 433 C)	BLACK (PMS BLACK C)	SLATE BLUE (PMS 2965 C)	CLASSIC NAVY (PMS 5395 C)
								
NAVY (PMS 296 C)	NAVY HEATHER (PMS 296 C)	CLASSIC NAVY HEATHER (PMS 296 C)	COBALT (PMS 286 C)	ROYAL HEATHER (PMS 294 C)	ROYAL (PMS 287 C)	TURQUOISE (PMS 638 C)	AQUAMARINE (PMS 632 C)	TURQUOISE HEATHER (PMS 312 C)
								
SKY HEATHER (PMS 659 C)	MISTY BLUE (17-4021 TCX)	BLUE AQUA (PMS 2905 C)	LAVENDER (PMS 2567 C)	PURPLE (PMS 273 C)	LT. BLACKBERRY (PMS 262 C)	BURGUNDY HEATHER (PMS 1817 C)	MAROON (PMS 490 C)	CARDINAL (PMS 209 C)
								
CURRENT (PMS 195 C)	GARNET (PMS 188 C)	RED HEATHER (PMS 1955 C)	BRICK RED (PMS 201 C)	RED (PMS 200 C)	BRITE PINK (PMS 220 C)	DUSTY ROSE (17-1520 TCX)	DUSTY PINK (PMS 7605 C)	BLUSH (13-1408 TCX)
								
LIGHT PINK (PMS 217 C)	BURNT ORANGE HEATHER (PMS 1605 C)	ORANGE (PMS 172 C)	RUST (PMS 180 C)	TANGERINE (PMS 1495 C)	PEACH (PMS 148 C)	GOLDEN WHEAT HEATHER (PMS 465 C)	GOLD (15-1058 TCX)	LIGHT YELLOW (PMS 461 C)
								
MINT (PMS 318 C)	TEAL (PMS 3282 C)	KELLY GREEN HEATHER (PMS 3415 C)	KELLY GREEN (PMS 348 C)	DARK GREEN (PMS 3435 C)	FOREST GREEN (PMS 560 C)	ALPINE GREEN (PMS 567 C)	HUNTER GREEN (PMS 626 C)	OLIVE HEATHER (PMS 5743 C)
								
ARMY (PMS 5743 C)	ARMY HEATHER (PMS 5747 C)	COCOA (PMS 7533 C)	SADDLE (PMS 2319 C)	SANDSTONE (PMS 7504 C)	BONE (11-0604 TCX)	OATMEAL HEATHER (PMS 7527 C)	OATMEAL HEATH- ER/SALT & PEPPER (PMS 7527 C & COOL GREY 9 C)	SAFETY YELLOW (13-0443 TCX)
								
SAFETY ORANGE (16-1364 TCX)	NEON PINK (17-2033 TCX)	NATURAL SHERPA (PMS 468 C)	FOREST CAMO	BLACK CAMO	ARMY CAMO	SNOW CAMO	TIGER CAMO	

BASIC FLEECE CAMO

LOOPBACK TERRY - SS1000, SS1000Z & SS1000C



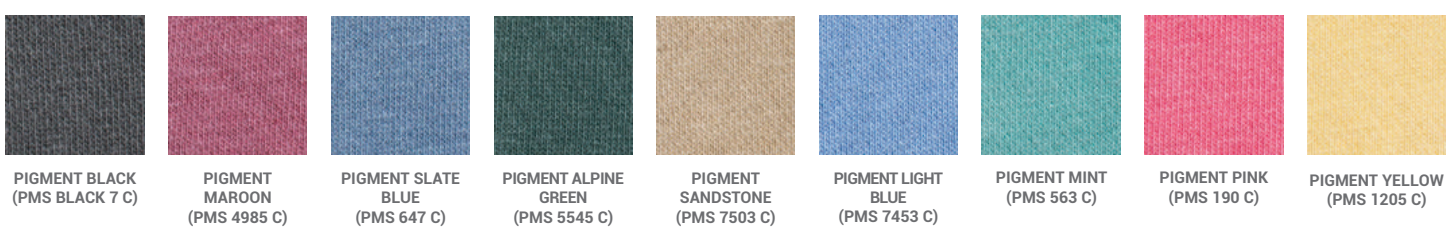
CALIFORNIA WAVE WASH - PRM2500, PRM2500Z, PRM2000 & PRM20PNT



SPECIAL BLEND - PRM30SBC, PRM33SBP, PRM33SBZ, PRM10TSB, PRM10TSBZ, PRM15YSB, PRM15YSBZ & INDBKTSB



PIGMENT DYE - PRM3500 & PRM4500



TIE DYE - PRM4500TD, PRM50PTTD, PRM50STTD

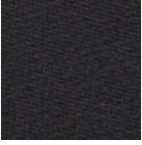


MINERAL WASH - PRM4500MW, PRM50PTMW, PRM50STMW



MINERAL WASH
BLACK

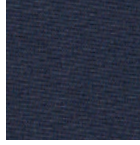
WATER RESISTANT SOFT SHELL - EXP35SSZ



BLACK
(PMS BLACK C)



GRAPHITE
(PMS 432 C)

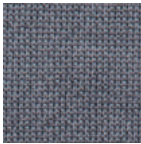


CLASSIC NAVY
(PMS 5395 C)

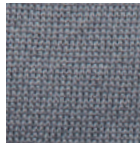
WATER RESISTANT POLY-TECH - EXP60PAZ, EXP70PTZ & EXP80PTZ



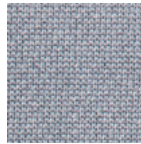
BLACK
(PMS BLACK C)



SOLID CHARCOAL
(PMS 431 C)



CLASSIC GREY
(PMS COOL GREY
10 C)



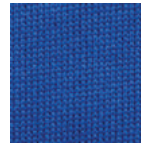
GUNMETAL
HEATHER
(PMS 424 C)



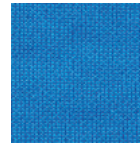
WHITE



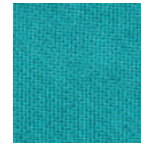
CLASSIC NAVY
(PMS 5395 C)



CLASSIC ROYAL
(PMS 287 C)



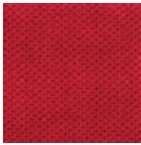
ASTER BLUE
(PMS 300 C)



LAPIS GREEN
(PMS 326 C)



CORAL
(PMS 191 C)



BRICK RED
(PMS 201 C)

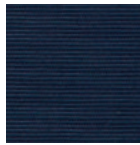
WATER RESISTANT NYLON - EXP95NB, EXP99CNB & EXP94NAW



BLACK
(PMS BLACK C)



GRAPHITE
(PMS 432 C)



CLASSIC NAVY
(PMS 5395 C)



CARDINAL
(PMS 209 C)



FOREST GREEN
(19-5513 TPX)



CLASSIC KHAKI
(13-0607 TPX)



FOREST CAMO



BLACK CAMO

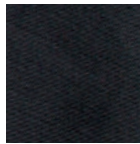
LIGHTWEIGHT WINDBREAKER - EXP94LWZ, EXP54LWP, EXP52BMR & EXP64CRP



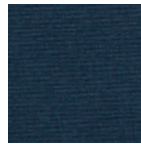
SMOKE
(COOL GREY 1 C)



GRAPHITE
(PMS 432 C)



BLACK
(PMS BLACK C)



CLASSIC NAVY
(PMS 5395 C)



ROYAL
(PMS 287 C)



MAROON
(PMS 490 C)



RED
(PMS 200 C)



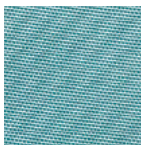
ARMY
(PMS 5743 C)



SADDLE
(PMS 2319 C)



CLASSIC KHAKI
(13-0607 TPX)



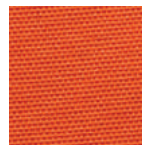
AQUA
(PMS 550 C)



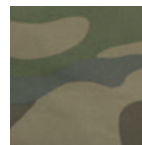
BLUSH
(PMS 196 C)



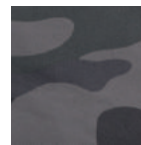
SAFETY YELLOW
(13-0443 TCX)



SAFETY ORANGE
(16-1364 TCX)



FOREST CAMO



BLACK CAMO



WHITE CAMO